

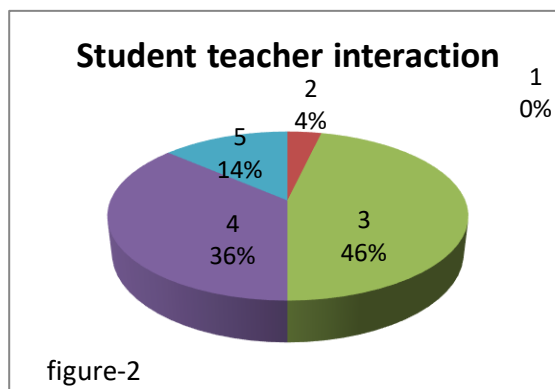
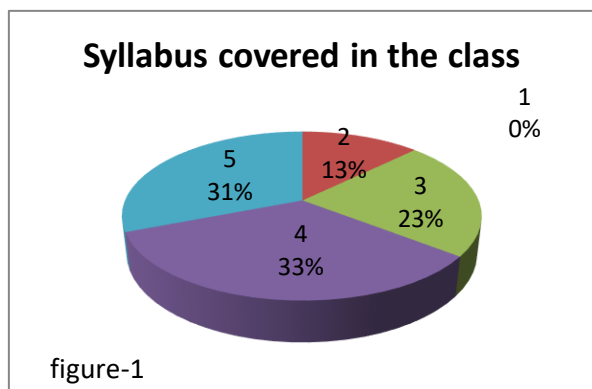
## **TULASI WOMEN'S COLLEGE, KENDRAPARA, ODISHA**

### **STUDENTS FEEDBACK FORM, 2020-21**

The Internal Quality Assessment Cell, Tulasi women's college, Kendrapara, Odisha, had sought feedback from the undergraduate students to evaluate the academic programme of the college for the academic year 2020-21. For this purpose, feedback from 110 students across all the concerned departments was collected through offline mode. The feedback of the student's analyzed by pie chart method. About 31% of the students found their respective syllabus covered in the class is excellent. At the same time 33% found it very good, 23% are good, while 13% of them reported it average, still which is also challenging. We have to take necessary steps regarding the syllabus covered in the class. Nearly all the surveyed students opined that more than 86% of their syllabus had been completed in the mentioned academic year, which is shown in Figure-1.

For the student teacher interaction 14% students opined that it is excellent, 36% are found it very good, 46% are good while 4% students reported it is average and below average is nil which is shown in figure-2. We have to improve our student teacher interaction so that the students find easy to share the difficulties during their study. For implementation of mentor-mentee system opinion regarding excellent is nil. 39% are found it very good, 55% are good while 6% students reported it is average and below average is nil which is shown in figure-3. So we have to take necessary steps for better implementation of mentor-mentee system.

Similarly for regularity in the conductance of classes and the conductance of examination including declaration of result, opinion of excellent is dull, 44% and 23% are found it very good, 46% and 55% are good while 7% and 19% students reported it is average and below average is almost nil which is shown in figure-4 and 5 respectively.



### Implementation of mentor-mentee system

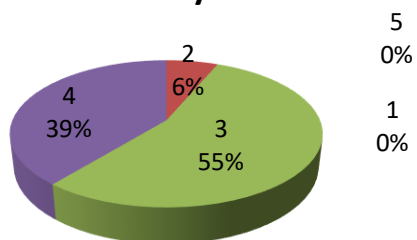


figure-3

### Regularity in Conductance of classes

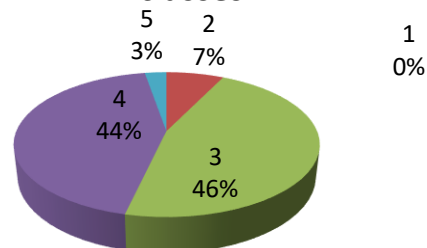


figure-4

### Conductance of Examination & Declaration of result

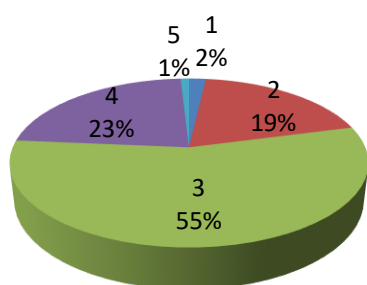


figure-5

5-% of excellent

4-% of very good

3-% of good

2-% of average

1-% of below average